

„In camp Ts'ammako“ (Wd 59-7)

By 1950 most of the expedition members had already been part of numerous other expeditions. They were therefore used to camping in the wild and sleeping under starry skies. In the expedition report as well as in her letters, Elisabeth Pauli only mentions camping conditions in passing, but several photographs document the tukuls that were built for the expedition in the respective local building styles. Many of them were built on the compounds of local headmen, who kindly offered the expedition protection and a place to stay.



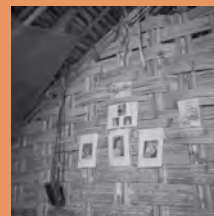
„Haberland in conversation with Konti Bala“ (Pa 51-11)

Konti Balla, a Ts'amakko headman, hosted the expedition team in his compound.



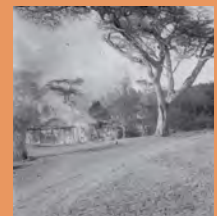
„Weidner and Mangeste in front of Weidner's hut“ (Wd 59-7)

Schulz-Weidner's house in the Shangama area, where he spent his longest research period of 4.5 months.



„The family wall inside the hut“ (Wd 73-4)

Expedition members tried to make themselves feel at home as much as possible in their temporary homes.



„After the fieldwork had been finished“ (Ha 51-2)

The tukul in Maale was burned after the expedition left. Local people were convinced that the abandoned house would otherwise stop the rain from falling.